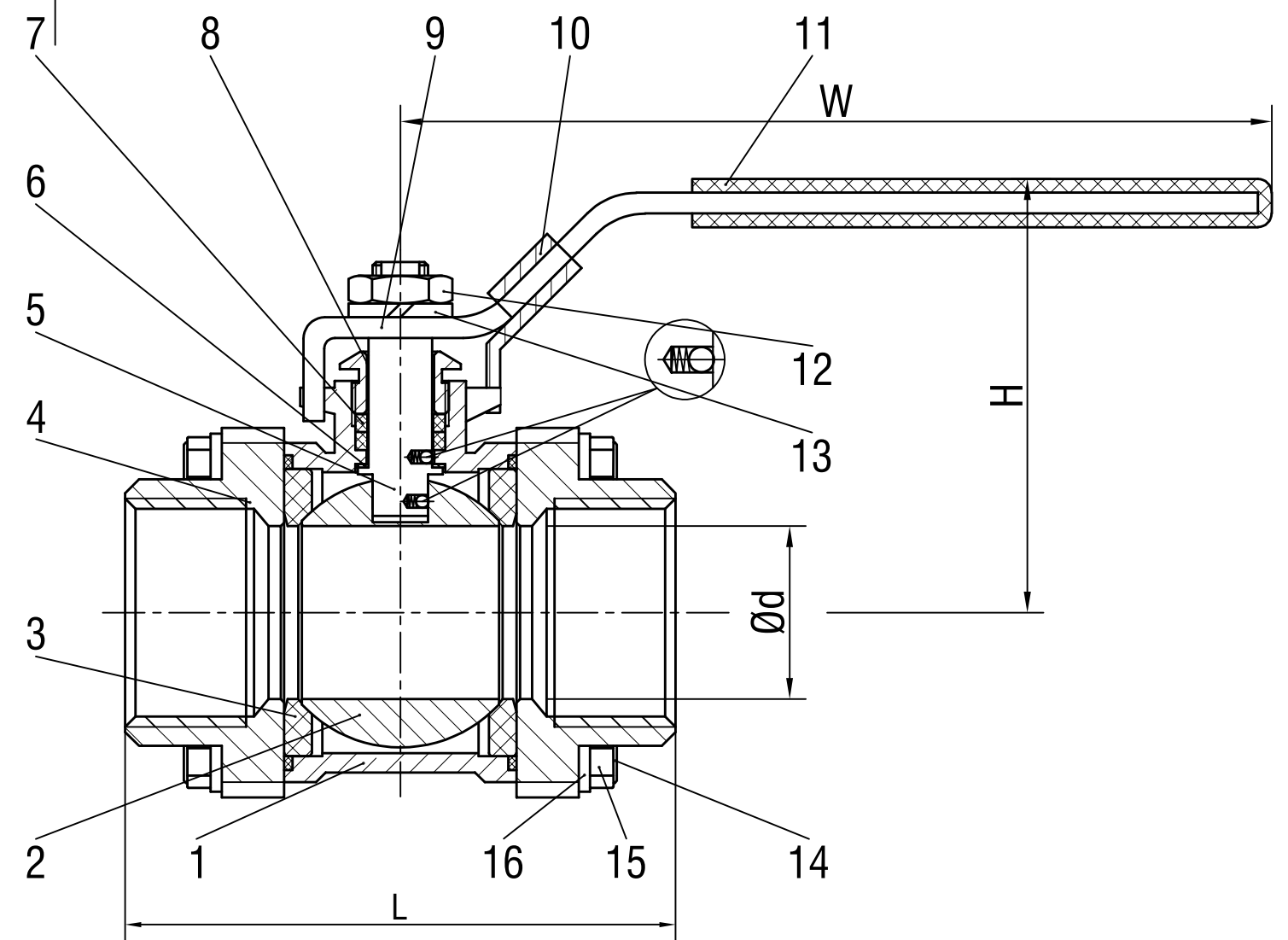


3PC BALL VALVE , FULL BORE , THREAD END , 1000WOG

Test and Inspection: API 598
 Internal Entry Blow-Out Proof Stem
 Nominal Diameter: DN8-DN100 (1/4" ~ 4")
 Suitable medium: Water, Steam, Oil products.
 Pressure Rating: 1000PSI



SIZE	1 / 4	3 / 8	1 / 2	3 / 4	1	1-1 / 4	1-1 / 2	2	2-1 / 2	3	4
Ød	11	12.5	15	20	25	32	38	50	65	76	94
L	51	51	61	71	80	94	103	126	158	179	213
H	43.5	43.5	48	59	61	79	83	100	130	140	155
W	102	102	102	124	124	153	153	192	242	242	281

				SERIES 52.100			
UNIT	mm / -in-	Replica ID	V02	Mark	Dimension	Date	
Design		Name of Parts	Erection Drawing	Product Name	3PC BALL VALVE		
Check		Scale:	Build No: 01	Drawing no:			
Craft				RV-3-F2PN63-01			
Ratify							

Item	Part	Material
1	BODY	CF8M
2	BALL	316
3	BALL SEAT	MG1241
4	CAP	CF8M
5	STEM	SUS316
6	THRUST WASHER	PTFE
7	STEM PACKING	PTFE
8	GLAND	SUS304
9	HANDLE	SUS304
10	LOCKING	SUS304
11	HANDLE COVER	PLASTIC
12	NUT	SUS304
13	SPRING WASHER	SUS304
14	BOLT	SUS304
15	NUT	SUS304
16	SPRING WASHER	SUS304