

SERIES 20

2-PIECE DESIGN



ValveWorks Series 20 Ball Valves feature a high quality investment casting body and ends. They are available 1/4" - 3" with threaded.

Sizes 1/4" - 3"

Full Bore

1000 WOG

Available in SS316 body ONLY

Threaded End (20.100)

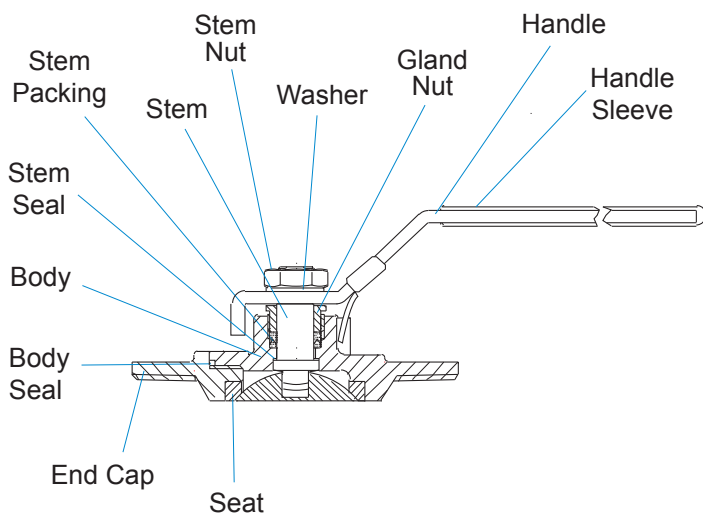
Investment Casting

Compact Design

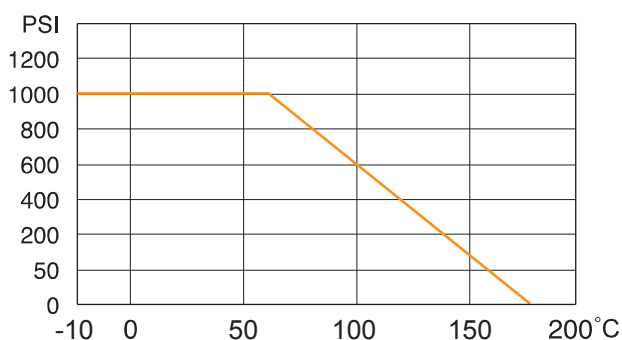
Blowout-Proof Stem

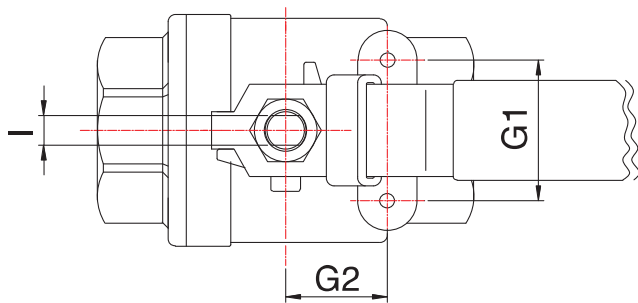
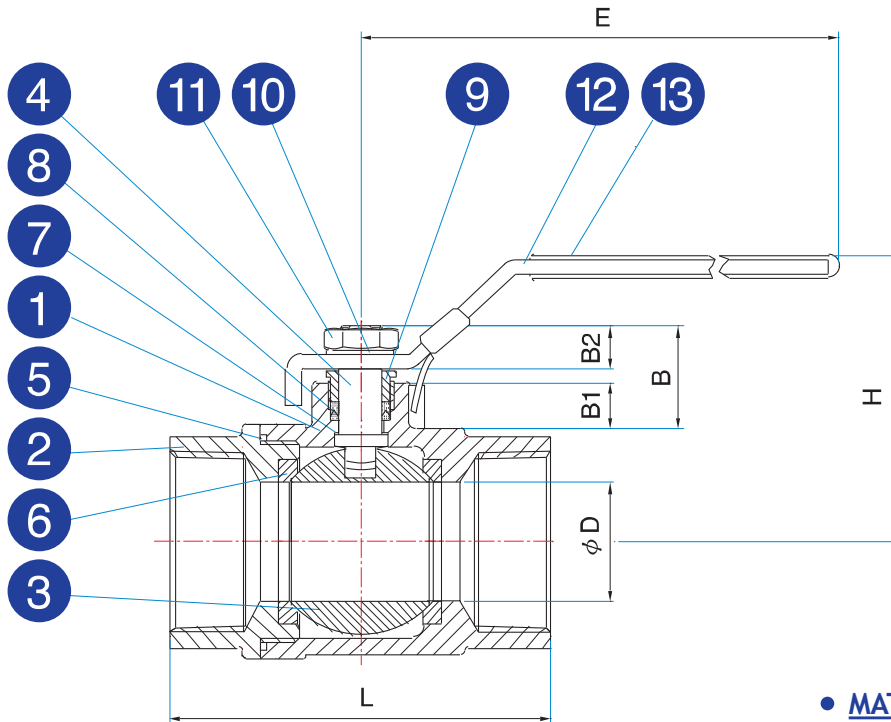
Standard Seat - TFM1600 (max. 180 °C)

Lockable Handle



- Pressure/Temperature Ratings





• MATERIALS LIST

NO.	PART NAME	MATERIAL
1	BODY	CF8M
2	END CAP	CF8M
3	BALL	SUS316
4	STEM	SUS316
5	BODY SEAL	PTFE
6	SEAT	TFM1600
7	STEM SEAL	PTFE
8	STEM PACKING	PTFE
9	GLAND NUT	SUS304
10	WASHER	SUS304
11	STEM NUT	SUS304
12	HANDLE	SUS304
13	HANDLE SLEEVE	VINYL

• DIMENSIONS (mm)

SIZE	B	B1	B2	φD	E	H	I	L	G1	G2	CV	Weight (kg)
1/4"	23.5	8.3	11	11.6	108	54	5	55.2	28	12.7	7	0.26
3/8"	23.5	8.3	11	12.5	108	54	5	55.2	28	12.7	8	0.26
1/2"	24.7	9.8	11	15	133	55	6.3	65.3	28	12.7	25	0.41
3/4"	25.5	10.7	11	20	133	59	6.3	75.5	35	22.4	50	0.56
1"	30.4	11.6	14.8	25	153	70	8	88.7	35	22.4	80	0.90
1 1/4"	29.7	11.1	14.8	32	153	75	8	101.4	38.1	25.4	150	1.34
1 1/2"	33	12	16	38	190	84	9.5	109.3	38.1	25.4	240	1.94
2"	30.7	9	16	50	190	92	9.5	124	38.1	25.4	460	3.00
2 1/2"	48.5	15.7	23	65	247	128	12	159.3	55	35	820	6.70
3"	47.5	14	23	80	247	137	12	175.3	55	35	1250	9.06

The information provided in this document is intended for informational purposes only and is subject to change without notice.