

SERIES 30M

3 & 4 - WAY MULTI-PORT BALL VALVE

3-PIECE DESIGN, FB

Sizes 3/4" - 12"

Full Bore

L-Port, T-Port or X-Port

Flanged Ends

ANSI 150 & ANSI 300

Available in WCB / SS316 body

3 Seat Design Maintains Proper Ball Position

Super Live Load Loaded Packing System

ISO 5211 Mounting Pad (Bracket Required)

Dual Anti-Static Device

Standard Seat - TFM1600 (max. 180 °C)

Seat Options

- 25% Carbon filled PTFE (MG1241)
(max. 220 °C)

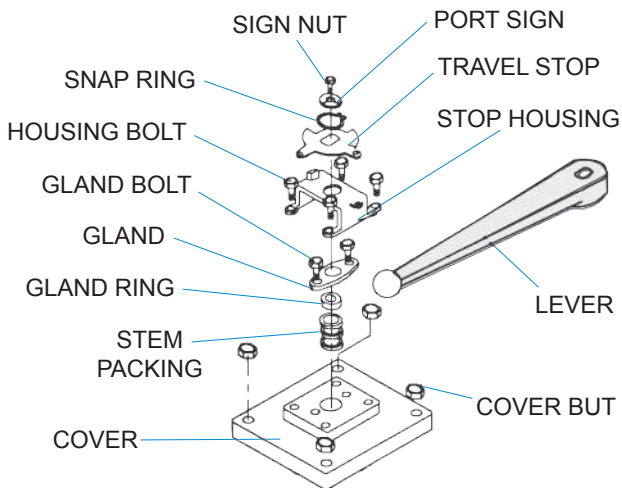
- 50% SS filled PTFE (GNP)
(max. 240 °C)

Lockable Handle (1/2" - 4")

Gearbox (5" - 12")

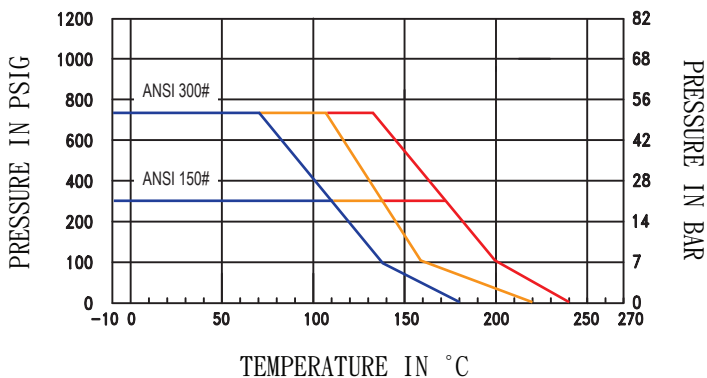


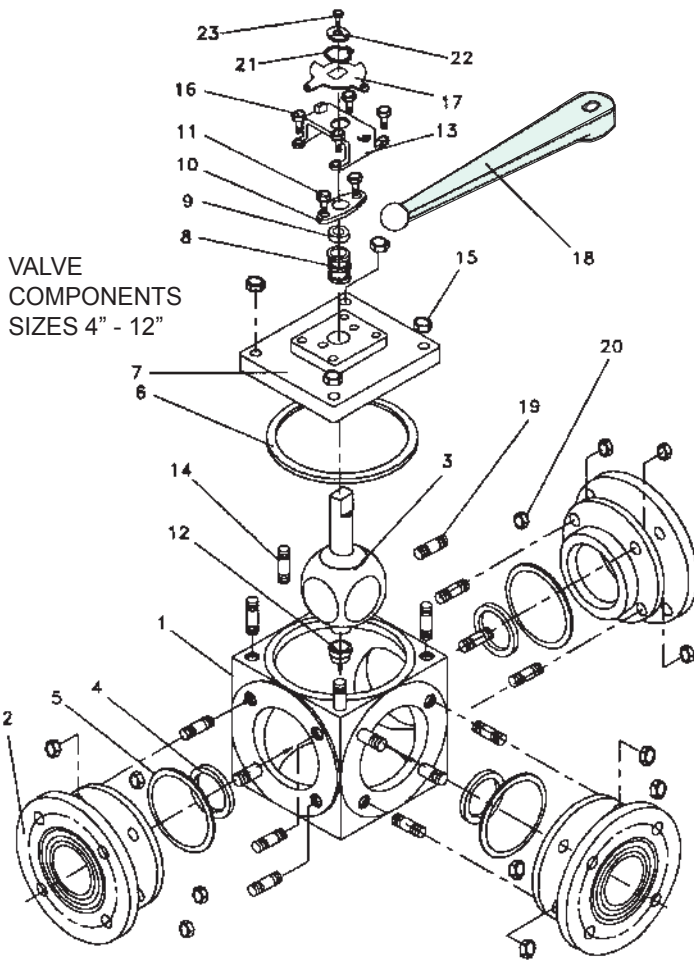
ValveWorks Series 30M this Multi-Port ball valve offers diverting and mixing flow patterns, often eliminating the need for two valves. The full port design is easily automated and is available with various seat materials. The bolts on side flanges make for easy seat changes as necessary to accommodate your service. Available in L, T or X-port configurations.



• Pressure/Temperature Ratings

- TFM1600
- 25% Carbon filled PTFE (MG1241)
- 50% SS filled PTFE (GNP)





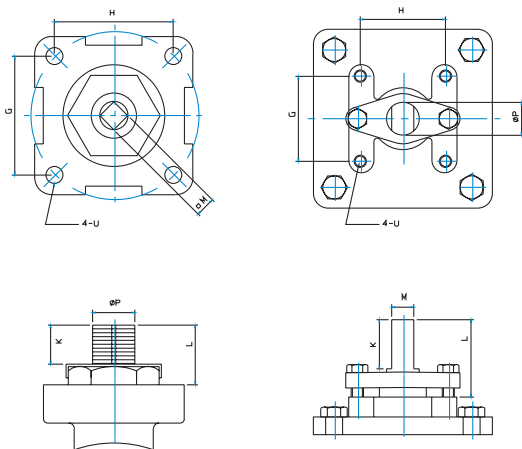
• MATERIALS LIST

NO.	PART NAME	30M - SS	30M - WCB
1	BODY	A351 GR CF8M	A216 GR WCB
2	END CONNECTOR	A351 GR CF8M	A216 GR WCB
3	BALL	A351 TYPE316	A351 TYPE316
4	SEAT	TFM Super-Tek	TFM Super-Tek
5	END GASKET	50/50	50/50
6	COVER GASKET	50/50	50/50
7	COVER	A351 GR CF8M	A216 GR WCB
8	STEM PACKING	TFM Super-Tek	TFM Super-Tek
9	GLAND RING	A167 TYPE304	CARBON STEEL
10	GLAND	A167 TYPE304	CARBON STEEL
11	GLAND BOLT	B8	B7
12	THRUST BEARING	50/50	50/50
13	STOP HOUSING	A351 GR CF8M	CARBON STEEL
14	COVER STUD	B8	B7
15	COVER NUT	A167 TYPE304	CARBON STEEL
16	HOUSING BOLT	B8	B7
17	TRAVEL STOP	A167 TYPE304	CARBON STEEL
18	LEVER	DUCTILE IRON	DUCTILE IRON
19	BODY STUD	B8	B7
20	BODY NUT	A167 TYPE304	CARBON STEEL
21	SNAP RING	SK5 CR PLATE	SK5 CR PLATE
22	PORT SIGN	A167 TYPE304	A167 TYPE304
23	SIGN NUT	A167 TYPE304	A167 TYPE304

ACTUATOR MOUNTING PADS

Size 3/4" - 1 1/2"

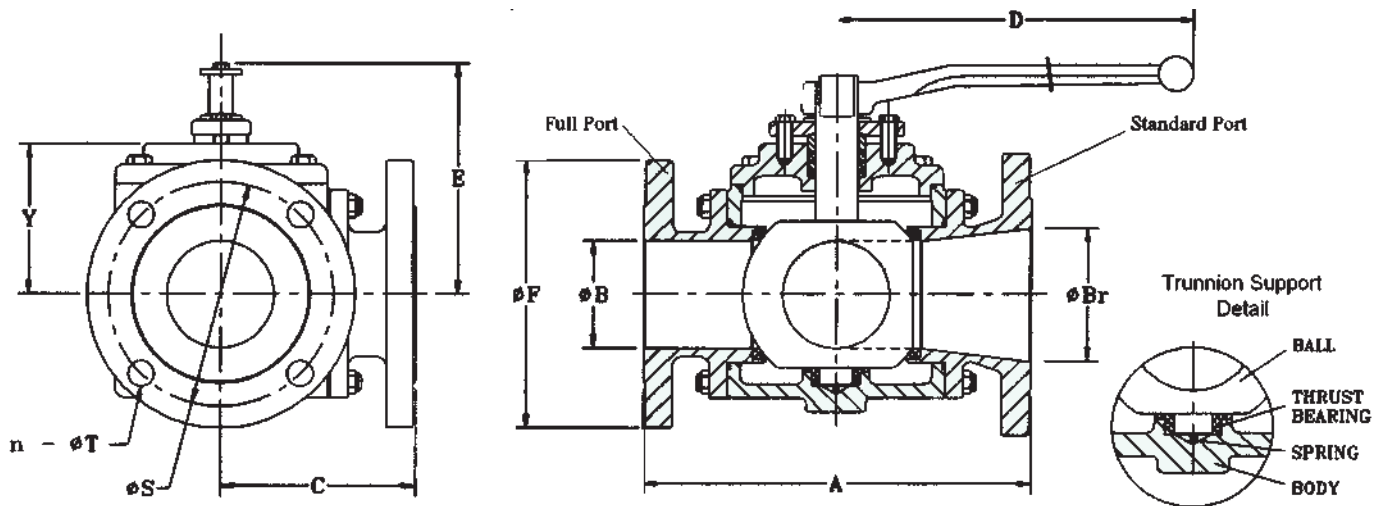
Size 2" - 12"



IMPORTANT: Verify the mounting dimensions before manufacturing mounting hardware.

• MOUNTING DIMENSIONS (mm)

	SIZE	3/4"	1"	1 1/2"	2"	3"	4"	6"	8"	10"	12"
G	in	1.95	1.95	1.95	1.89	1.89	3.50	3.50	4.53	4.53	4.53
	mm	49.5	49.5	49.5	48	48	89	89	115	115	115
H	in	1.95	1.95	1.95	2.83	3.50	3.50	3.50	4.53	4.53	4.53
	mm	49.5	49.5	49.5	72	89	89	89	115	115	115
K	in	0.47	0.47	0.63	1.57	1.97	2.44	2.36	2.36	2.76	2.76
	mm	12	12	16	40	50	62	60	60	70	70
L	in	0.49	0.53	0.73	1.93	3.15	3.15	3.54	3.27	4.29	4.33
	mm	12.5	13.5	18.5	49	80	80	90	83	109	110
M	in	0.354	0.433	0.551	0.669	0.669	0.906	1.378	1.772	1.772	2.165
	mm	9	11	14	17	17	23	35	45	45	55
ØP	in	0.46	0.55	0.61	0.87	1.16	1.34	1.77	2.36	2.36	2.76
	mm	11.8	14	15.5	22	29.5	34	45	60	60	70
U	in	Ø0.33	Ø0.28	Ø0.36	5/16-18	1/2-13	1/2-13	1/2-13	5/8-11	5/8-11	5/8-11
	mm	Ø8.5	Ø7	Ø9.2							



• DIMENSIONS (mm)

SIZE		3/4"	1"	1 1/2"	2"	3"	4"	6"	8"	10"	12"
A	in	6.65	7.3	7.17	8.66	11.26	13.65	16.77	20.94	27.56	29.92
	mm	169	185	182	220	286	347	426	532	700	760
øB	in	0.75	1.0	1.50	2.01	3.00	4.02	5.98	7.95	9.84	11.77
	mm	20	25	40	51	76	102	152	202	250	300
C	in	3.33	3.65	3.57	4.33	5.62	6.85	8.47	10.63	13.78	15.02
	mm	84.5	92.5	90.5	110	143	174	215	270	350	381.5
D	in	7.48	8.38	15	15	15	20				
	mm	190	212.5	380	380	380	530				
E	in	3.16	3.28	4.10	4.92	6.68	8.03	10.04	11.54	13.00	14.55
	mm	80	83	104	125	170	204	255	293	330	370
øF	in	3.88	4.25	5.00	5.99	7.52	9.01	11.00	13.50	16.00	18.99
	mm	98.5	108	127	152	191	229	279	343	406	483
n		4	4	4	4	4	8	8	8	12	12
øS	in	2.75	3.12	3.88	4.75	6.00	7.50	9.50	11.75	14.25	17.18
	mm	70	79	98.5	120.5	152.4	190.5	241.3	298.4	361.9	437
øT	in	0.63	0.63	0.63	0.75	0.75	0.75	0.90	0.90	1.02	1.26
	mm	16	16	16	19	19	19	22	22	26	32
Y	in	2.62	2.66	2.48	2.87	3.62	4.88	6.50	7.60	9.06	10.97
	mm	66.6	67.6	63	73	92	124	155	193	230	279
CV	90°	16	30	50	100	240	400	970	1,850	3,500	
	180°	40	70	230	390	930	1,650	5,000	9,000	16,000	
Torque (Nm)		28	44	54	79	181	316	972	1,751	C/F	C/F
Weight (kg)		5.4	7.3	9.1	16.3	32.7	58.1	113.4	204.1	385.6	C/F

• FLOW DIRECTIONS

TURN \ PORT	0°	90°	180°	270°
L				
T				
X				

Gear Operators are recommended on size 6" and larger.

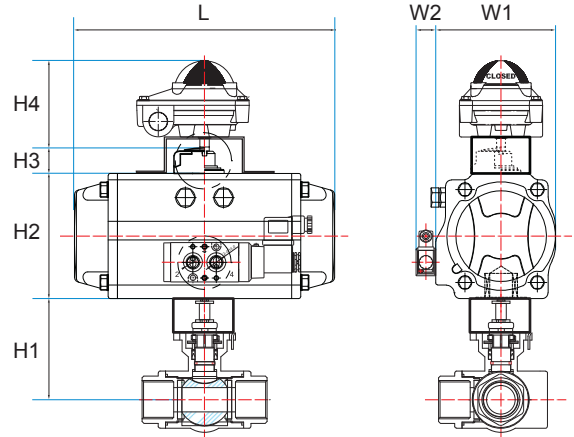
Valve Automation with HKC



• Pneumatic Actuator - Double Acting

DN (mm)	Size (inch)	Torques	Actuator	H1	H2	H3	H4	W1	W2	L	Weight (kg)
20	3/4"	28.2	HP-75	106.60	104.00	20.00	90.00	96.00	29.50	210.00	9.80
25	1"	43.5	HP-75	107.60	104.00	20.00	90.00	96.00	29.50	210.00	11.62
40	1 1/2"	54.2	HP-88	103.00	116.00	20.00	90.00	108.00	29.50	247.00	14.73
50	2"	79.1	HP-100	148.00	128.00	20.00	90.00	123.00	29.50	268.00	24.21
80	3"	181	HP-125	192.00	159.00	20.00	90.00	151.00	29.50	347.00	46.04
100	4"	316	HP-145	224.00	179.00	30.00	90.00	172.00	29.50	414.00	75.04
150	6"	972	HP-210	255.00	256.00	30.00	90.00	236.00	29.50	628.00	162.28
200	8"	1751	HP-212	318.00	256.00	30.00	90.00	236.00	29.50	644.00	281.70

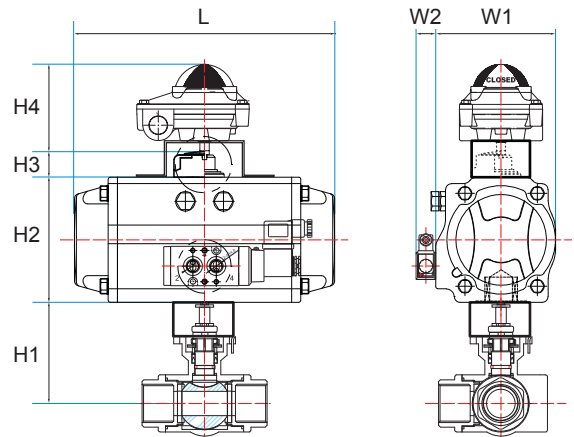
This selection of the actuators are based on below condition:-
 - Air Supply Pressure : 5.5 bar
 - Operating Pressure : 10 bar
 - Safety Factor : 30%



• Pneumatic Actuator - Single Acting

DN (mm)	Size (inch)	Torques	Actuator	H1	H2	H3	H4	W1	W2	L	Weight (kg)
20	3/4"	28.2	HP-88S (S11)	106.60	116.00	20.00	90.00	108.00	29.50	247.00	11.72
25	1"	43.5	HP-115S (S11)	107.60	146.00	20.00	90.00	141.00	29.50	316.00	18.95
40	1 1/2"	54.2	HP-115S (S11)	103.00	146.00	20.00	90.00	141.00	29.50	316.00	20.76
50	2"	79.1	HP-125S (S11)	148.00	159.00	20.00	90.00	151.00	29.50	347.00	31.32
80	3"	181	HP-160S (S11)	192.00	196.00	30.00	90.00	190.00	29.50	467.00	60.69
100	4"	316	HP-200S (S11)	224.00	247.00	30.00	90.00	227.00	29.50	555.00	107.61
150	6"	972	HP-212S (S11)	255.00	256.00	30.00	90.00	236.00	29.50	1022.00	116.28
200	8"	1751		318.00							

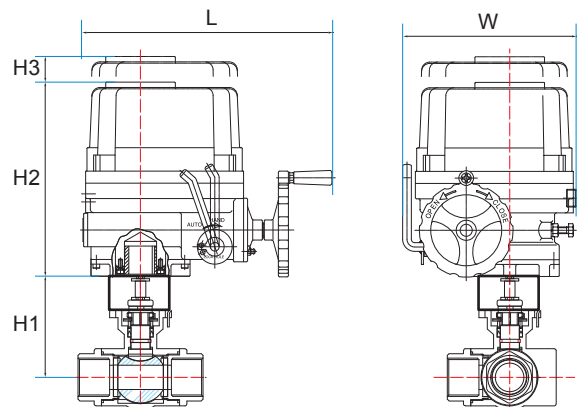
This selection of the actuators are based on below condition:-
 - Air Supply Pressure : 5.5 bar
 - Operating Pressure : 10 bar
 - Safety Factor : 30%



• Electric Actuator

DN (mm)	Size (inch)	Torques	Actuator	H1	H2	H3	W	L	Weight (kg)
20	3/4"	28.2	HQ-006	106.60	137.00		105.00	126.00	9.80
25	1"	43.5	HQ-008	107.60	235.00		170.00	258.00	16.02
40	1 1/2"	54.2	HQ-010	103.00	235.00		170.00	258.00	17.83
50	2"	79.1	HQ-015	148.00	268.00		229.00	338.00	34.81
80	3"	181	HQ-030	192.00	304.00		259.00	368.00	56.74
100	4"	316	HQ-050	224.00	304.00		259.00	368.00	83.94
150	6"	972	HQ-200	255.00	563.00		319.00	410.00	191.28
200	8"	1751	HQ-300	318.00	563.00		319.00	410.00	285.70

This selection of the actuators are based on below condition:-
 - Operating Pressure : 10 bar
 - Safety Factor : 50%



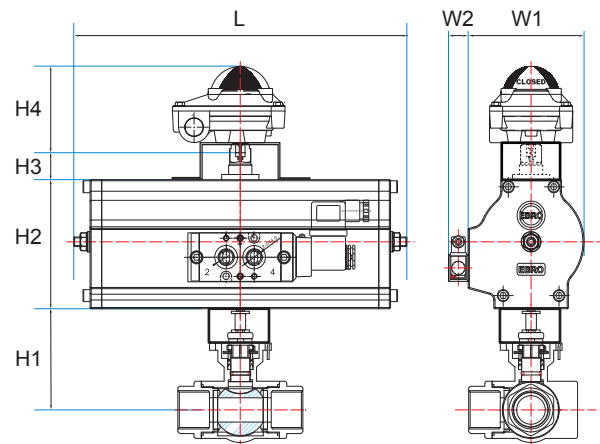
Valve Automation with EBRO Armaturen



• Pneumatic Actuator - Double Acting

DN (mm)	Size (inch)	Torques	Actuator	H1	H2	H3	H4	W1	W2	L	Weight (kg)
20	3/4"	28.2	EB 5.1-SYD	106.60	77.00	30.00	90.00	72.00	29.50	174.00	8.50
25	1"	43.5	EB 5.1-SYD	107.60	77.00	30.00	90.00	72.00	29.50	174.00	10.32
40	1 1/2"	54.2	EB 6.1-SYD	103.00	91.00	30.00	90.00	88.00	29.50	224.00	13.43
50	2"	79.1	EB 6.1-SYD	148.00	91.00	30.00	90.00	88.00	29.50	224.00	21.21
80	3"	181	EB 10.1-SYD	192.00	128.00	30.00	90.00	122.00	29.50	334.00	42.24
100	4"	316	EB 10.1-SYD	224.00	128.00	30.00	90.00	122.00	29.50	334.00	68.44
150	6"	972	EB 12.1-SYD	255.00	156.00	30.00	90.00	145.00	29.50	392.00	128.98
200	8"	1751	EB 18.1-SYD	318.00	243.00	30.00	90.00	196.00	29.50	590.00	251.70

The selection of the actuators are based on below condition:-
 - Air Supply Pressure : 5.5 bar
 - Operating Pressure : 10 bar
 - Safety Factor : 30%



• Pneumatic Actuator - Single Acting

DN (mm)	Size (inch)	Torques	Actuator	H1	H2	H3	H4	W1	W2	L	Weight (kg)
20	3/4"	28.2	EB 6.1-SYS (50)	106.60	91.00	30.00	90.00	88.00	29.50	351.00	11.10
25	1"	43.5	EB 8.1-SYS (50)	107.60	108.00	30.00	90.00	99.00	29.50	408.00	14.92
40	1 1/2"	54.2	EB 8.1-SYS (50)	103.00	108.00	30.00	90.00	99.00	29.50	408.00	16.73
50	2"	79.1	EB 10.1-SYS (50)	148.00	128.00	30.00	90.00	122.00	29.50	557.00	30.71
80	3"	181	EB 12.1-SYS (50)	192.00	156.00	30.00	90.00	145.00	29.50	661.00	55.84
100	4"	316	EB 16.1-SYS (50)	224.00	212.00	30.00	90.00	150.00	29.50	856.00	108.94
150	6"	972	EB 22.1-SYS (50)	255.00	283.00	30.00	90.00	244.00	29.50	1127.00	231.18
200	8"	1751	EB 26.1-SYS (50)	318.00	350.00	30.00	90.00	336.00	29.50	1472.00	439.30

The selection of the actuators are based on below condition:-
 - Air Supply Pressure : 5.5 bar
 - Operating Pressure : 10 bar
 - Safety Factor : 30%

